

## Certificate of Analysis

Axygen Bioscience Limited hereby certifies that the product described below has been manufactured in accordance with established manufacturing guidelines and product specifications. The product conforms to all Quality requirements.

**Catalog Number:** AP-MN-MS-GDNA-4

**Product Description:** AxyPrep Multisource Genomic DNA Miniprep Kit (Finished Kit)

**Mfg. Lot Number:** KC19070103

### 1. Spectrophotometric Analysis (uv absorption)

◆**A<sub>260</sub>/A<sub>280</sub> Testing Specification:** Ultraviolet absorption of DNA: Acceptable Range for:  $A_{260}/A_{280}=1.8\pm 0.15$ .

◆**Yield Specification:** Comparison of the Test Sample to a previously tested Standard. Acceptable range for Test Sample is  $\leq \pm 10\%$  of Standard, based upon spectrophotometric analysis. The "Standard" is a previously tested and validated sample.

#### Test Results:

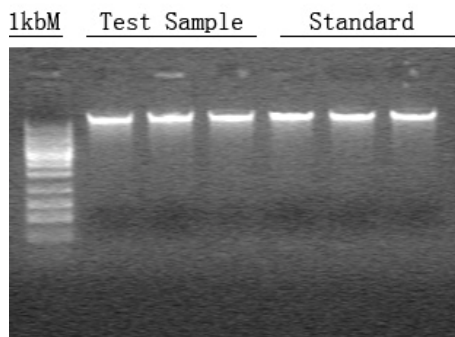
Item	Test Data						Samples
	1	2	3	4	5	6	
A <sub>260</sub>	0.619	0.644	0.634	0.607	0.602	0.585	1,2,3 are duplicate Test Samples
A <sub>280</sub>	0.343	0.346	0.348	0.330	0.327	0.308	
A <sub>260</sub> /A <sub>280</sub>	1.80	1.86	1.82	1.84	1.84	1.90	4,5,6 are duplicate Standards
Yield (μg)	5.57	5.80	5.69	5.46	5.42	5.27	
[Test Sample/Standard] Yield Difference	5.63%						
Electrophoresis	√	√	√	√	√	√	<b>PASS</b>
No visible RNA	√	√	√	√	√	√	

### 2. Electrophoretic Analysis

#### ◆Electrophoresis Specification:

- a. Agarose gel electrophoresis of samples exhibits a defined, high molecular weight genomic DNA band with minimal degradation.
- b. Agarose gel electrophoresis of samples exhibits no visible RNA.

#### Gel image:



Axygen Bioscience Limited warrants and represents that all inspections and testing for the article described above have been performed at Axygen Bioscience Limited QC laboratory located on-site at the manufacturing plant. Axygen Bioscience Limited manufacturing facility is located at Building B2, Industrial Zone of Xiacheng District (Huafeng,Shiqiao), Hangzhou 310022,P.R.China.

Approved By: \_\_\_\_\_ Date: \_\_\_\_\_  
Quality Assurance